

INTERLOCK PALLET RACKING SYSTEM

The complete range of Pallet Racking Solutions



The SCHAEFER Group



Fritz Schaefer GmbH, Germany



Simpang Renggam Factory, Malaysia



Kunshan Factory, Shanghai China

Since its inception in 1937 by Mr. Fritz Schaefer, SSI SCHAEFER has been one of the world's leading suppliers of a comprehensive range of high-quality storage systems for warehouses, manufacturing plants and commercial offices, and includes a whole range of systems and containers for the waste-handling and recycling sector. Employing over 7,500 people in 50 offices, from 35 countries on 4 continents, SSI SCHAEFER is the single largest manufacturer of industrial storage systems.

• SCHAEFER IN ASIA

SSI SCHAEFER has operated in Asia for more than 23 years, and now has 13 offices in 10 countries covering the Middle East, China, the ASEAN region, and Australia. Beginning with the Interlock Pallet Racking range in 1989, SSI SCHAEFER now produces an extensive range of SSI SCHAEFER products in its state of the art manufacturing plants situated in Malaysia and China.

• ACCREDITATIONS

SSI SCHAEFER's Interlock Pallet Racking Systems have been independently tested in both UK and Germany in accordance to FEM 10.02.02 Codes of Practice. The systems also obtained accreditations of AS 1250, AS 1538, RMI, SEMA (Storage Equipment Manufacturers' Association) codes and ISO 9001 compliance.

Today, Interlock Pallet Racking is widely accepted and firmly established as the market leader in APAC.

• SOLUTIONS THAT FIT

International presence, outstanding customer service, decades of experience, and first-class teamwork, provide a one-stop shop convenience and major benefits for its extensive client base when it comes to cost effective solutions, project planning and implementation. From a plastic container to sophisticated, cutting-edge automation technology, SSI SCHAEFER is equipped to assist customers with professional Solutions That Fit.

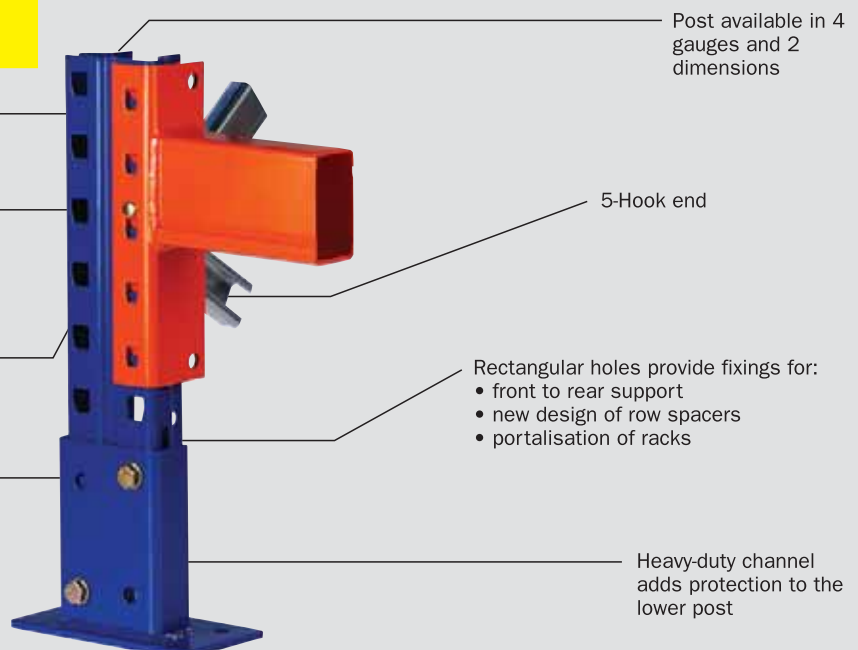
Interlock 600

Central rib to strengthen front face

50mm slot pattern with tapered fixing for high fixity

Secure safety lock

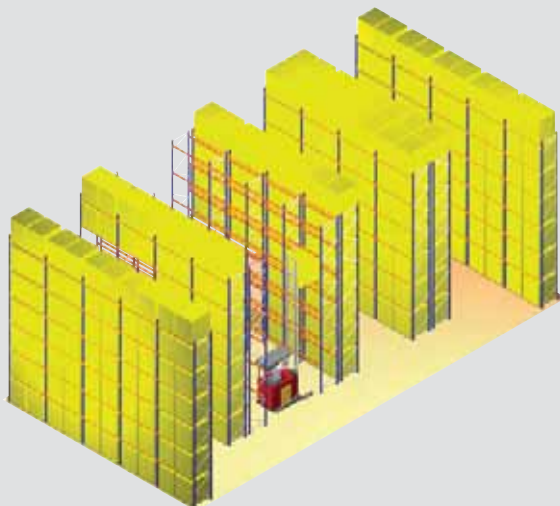
2 Bolt fixing to enhance frame weight loading



Selective Pallet Racking

Commonly known as adjustable pallet racking, this is the perhaps the most popular and economical form of pallet racking providing safe 100% selective storage up to 11m in height, fully utilizing valuable air space.

Interlock Pallet Racking can be designed to meet virtually any pallet size or weight and can be used in conjunction with all types of lift trucks. A wide range of accessories is available to accommodate non-standard loads.



Exel Logistics, Thailand

Very Narrow Aisle (VNA) Pallet Racking - High Bay Storage

Interlock Pallet racking systems are designed to meet the new generation of warehouses up to 15m high, designed around the operating tolerances of VNA equipment with aisles marginally wider than the load. Such structures must have a high level of rigidity and accurate manufacturing tolerances. Interlock is designed to meet these requirements.

An increasingly wide range of equipment is now being marketed. The final choice depends on a number of factors – size of installation, throughput, order picking requirements, size and weight of loads, capital available etc.

There are many options available. We are in an excellent position to offer unbiased opinions based on our considerable market experience and knowledge of the storage and material handling industry.



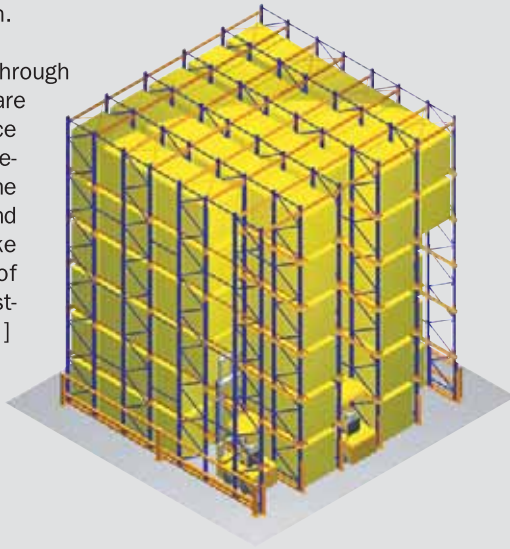
ECCO, Thailand

Drive-In Drive-Through Pallet Racking

Drive-in, Drive-through systems provides maximum storage capacity using the minimum amount of space. It is particularly suited to store very large quantities of homogeneous product.

Drive In or Double Access Systems consists of continuous lanes of racking with only a single load and retrieval aisle. Loading and unloading is undertaken by means of counter balance or reach trucks that drive down each lane into the racks. Drive In racking operates on the basis First-in Last-out [FILO], therefore it only suits product, which is stored in sufficient volume to require multiple lanes to ensure stock rotation.

When operating Drive-Through racking, access aisle are positioned on either face of the Drive Block. Drive-Through racking offers the advantage that picking and replenishment can take place independently of each other, allowing First-in First-out [FIFO] principals to be operated.

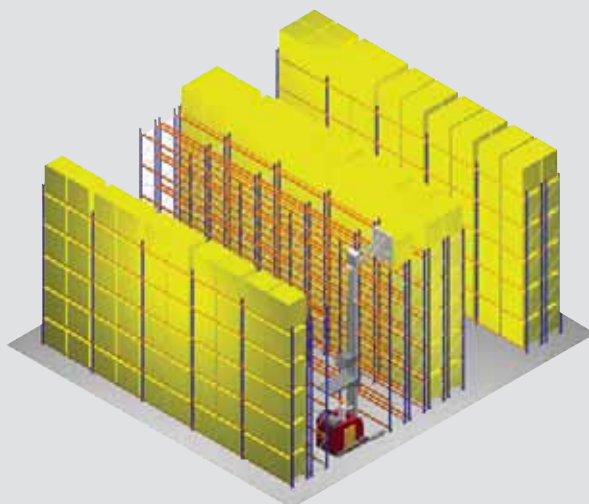


PT. Megasurya Mas, Indonesia

Double Deep Pallet Racking

A derivative to the Selective pallet racking, the Double Deep system requires the use of a specialist reach truck or an attachment fitted to reach truck. Whilst achieving increases in capacity of up to 30% above the former, only 50% of the pallets are immediately accessible.

This system however provides an excellent method of increasing warehouse capacity or when alternative systems such as the Drive-In which require high numbers of homogenous pallet types, are not possible.



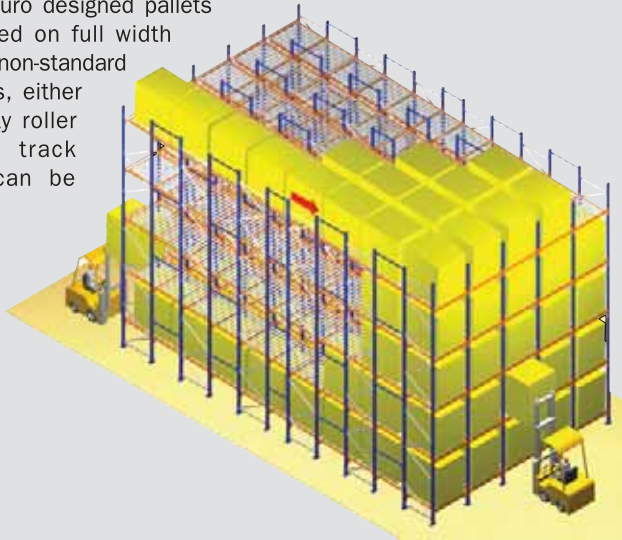
Brother International, Australia

Pallet Live Storage

Working on the principle of “parts to the picker”, the Live Storage system provides excellent volume utilization on First-in First-Out (FIFO) principle.

Speed reduction units control the speed of pallets, and prevent line build up and pressure, automatic offload separation gates and entry guides ensure ease of operation. As each lane can be used to store different commodities, more picking faces are available than with Drive-in.

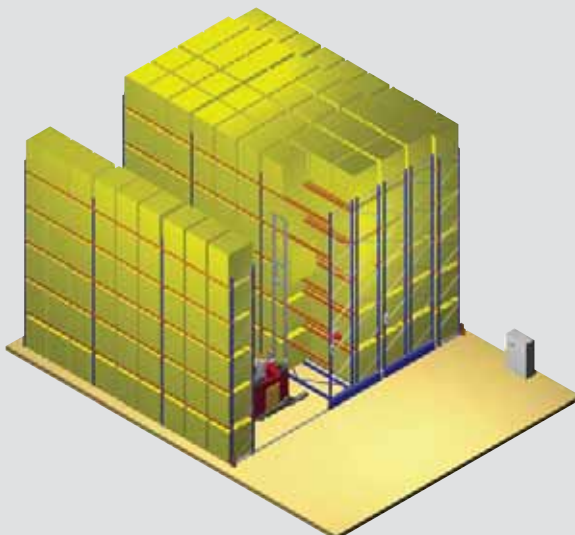
Standard Euro designed pallets can be used on full width rollers. For non-standard pallet sizes, either high-density roller or multi track systems can be provided.



Bom Bom Food, Singapore

Mobile Pallet Racking

Mobile Pallet Racking can increase storage capacity by over 100% over the conventional static racks without loss of selectivity. The Mobile Pallet Racking system comprises of individual racks mounted on mobile bases. These bases are power driven, and can be controlled using hand held remote controls. Using low maintenance electric motors, the mobile bases run on the rails accurately in-laid into the floor. These bases are capable of supporting rack lengths in excess of 45m and weights up to 500 tons.



Gold Cold, Malaysia

Schaefer Satellite System (SSS)

The perfect compliment to SDI or any high-density storage systems, the Schaefer Satellite System (SSS) is versatile and highly effective in reducing handling time and increase overall productivity.

No special handling equipment is needed. In fact SSS makes efficient use of the existing lift truck fleet with the following valuable features:

- **Remote Operation**
- **On-board Battery**
- **Re-charging**
- **Safety Lock**



Safety Lock



Quick Change Battery

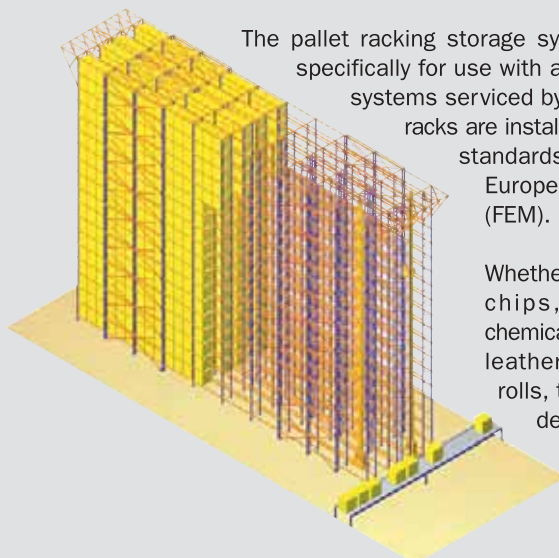


PT HM Sampoerna, Indonesia

Automated Storage & Retrieval System (AS/RS)

Fully automated warehouse and materials management system allows for accurate and timely inventory information and provide JIT delivery of raw materials and components from the suppliers to its production lines. It integrates the processes relating to receiving and stocking in.

The pallet storage system is based on the transfer of pallets via pallet conveyors and transfer carriages to the pallet racking serviced by Storage and Retrieval Machines.



The pallet racking storage system is designed specifically for use with automated storage systems serviced by SR machine. The racks are installed to the stringent standards of Federation of European Manufacturers (FEM).

Whether it is cars, potato chips, pallets of chemicals, nuts and bolts, leather goods or paper rolls, the system can be designed to suit any type of products.



Paperland, Malaysia

Other Options

Pick Module



SDV Logistics, Singapore

Multi-Tier



PT Hero, Indonesia

Push Back



Tesco Lotus, Thailand

Steel Decking



Galvanised dipped steel decking

Mesh Decking



Pallet Rack / KDR



Sprinkler



Sprinkler heads may be located within the racking, or in the gap between 2 sides of double faced rackings



ABSOLUTE STORAGE

367-373 SOUTH GIPPSLAND HIGHWAY
DANDENONG VIC 3175

Mb: 0419 796 670 Ph: (61-3) 9799-2291 Fx: (61-3)
9799-4418

Sales Enquiries: sales@absolutestorage.com.au

LIT/0502/A10009 Jul 2007.R2.

Regional Head Office

SINGAPORE

Schaefer Systems International Pte Ltd
73, Tuas Avenue 1
Singapore 639512
Phone +65/ 6863 0168
Fax +65/ 6863 0288
eMail singapore@ssi-schaefer.sg
www.ssi-schaefer.sg

AUSTRALIA

SCHAEFER Systems International
Pty Limited (Sydney's Office)
8/30 Heathcote Road,
Moorebank NSW 2170, Australia
Phone +61/ 2/ 9824 3844
Fax +61/ 2/ 9824 3855
eMail schaeferssi@schaeferssi.com.au
www.ssi-schaefer.com.au

CHINA

SSI SCHAEFER Systems International
(Kunshan) Co., Ltd
Room 13-F, West Block,
Shanghai Hi-Tech King World
668 Beijing Dong Lu, Shanghai,
China 200001
Phone +86/ 21/ 5308 3678
Fax +86/ 21/ 5353 0955
eMail shanghai@ssi-schaefer.cn
www.ssi-schaefer.cn

HONG KONG

Schaefer Systems International Limited
Unit 2609, 26/F Peninsula Tower,
No. 538 Castle Peak Road,
Cheung Sha Wan, Kowloon, Hong Kong
Phone +852/ 2959 1838
Fax +852/ 2741 8821
eMail schaefer@ssi-schaefer.hk
www.ssi-schaefer.hk

INDONESIA

PT Sistim Solusindo Internasional
Konica Building 5th Floor, Jalan Gunung
Sahari Raya No. 78, Jakarta 10610
Phone +62/ 21/ 425 7648
Fax +62/ 21/ 425 7649
eMail indonesia@ssi-schaefer.co.id
www.ssi-schaefer.co.id

MALAYSIA

SSI Schaefer Systems (M) Sdn Bhd
Suite G-2 N-Tatt Building
No. 2, Jalan TP5,
Taman Perindustrian UEP Subang Jaya
47600 Subang Jaya, Selangor Darul Eshan
Malaysia
Phone +60/ 3/ 8024 6373
Fax +60/ 3/ 8024 6273
eMail malaysia@ssi-schaefer.com.my
www.ssi-schaefer.com.my

MIDDLE EAST

SSI Schaefer LLC
PO Box 37600
Sheikh Zayed Road
Dubai, United Arab Emirates
Phone +971/ 4/ 3400 077
Fax +971/ 4/ 3400 078
eMail info@ssi-schaefer.ae
www.ssi-schaefer.ae

PHILIPPINES

SSI SCHAEFER Systems Philippines Inc.
Unit 2403-A 24th Floor East Tower
Philippine Stock Exchange Centre Condominium
Exchange Road, Ortigas Center
1600 Pasig City, Philippines
Phone +63/ 2/ 637 9002
Fax +63/ 2/ 638 3771
eMail sales@ssi-schaefer.ph
www.ssi-schaefer.ph

THAILAND

SSI Schaefer Systems International Co., Ltd
3904-5, 9th Floor, BB Building
54 Sukumvit 21 Road (Asoke)
Klong Toey Nua, Wattana
Bangkok 10110, Thailand
Phone +66/ 2/ 204 0205
Fax +66/ 2/ 204 0198
eMail info@ssi-schaefer.co.th
www.ssi-schaefer.co.th

VIETNAM

SCHAEFER SYSTEM INT'L PTE LTD
Floor 7, Green House Building
62A Pham Ngoc Thach St., Dist.3,
HCMC, Vietnam
Phone +84/ 8/ 820 9916
Fax +84/ 8/ 820 9917
eMail sales@ssi-schaefer.vn
www.ssi-schaefer.vn